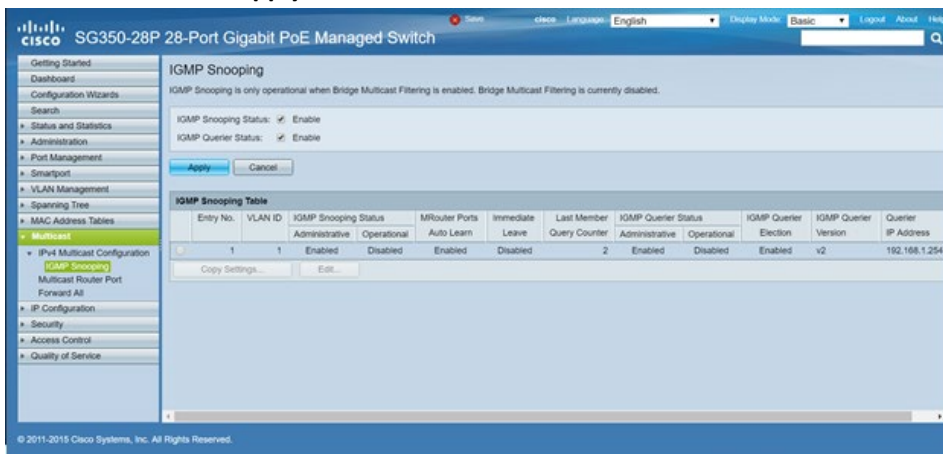




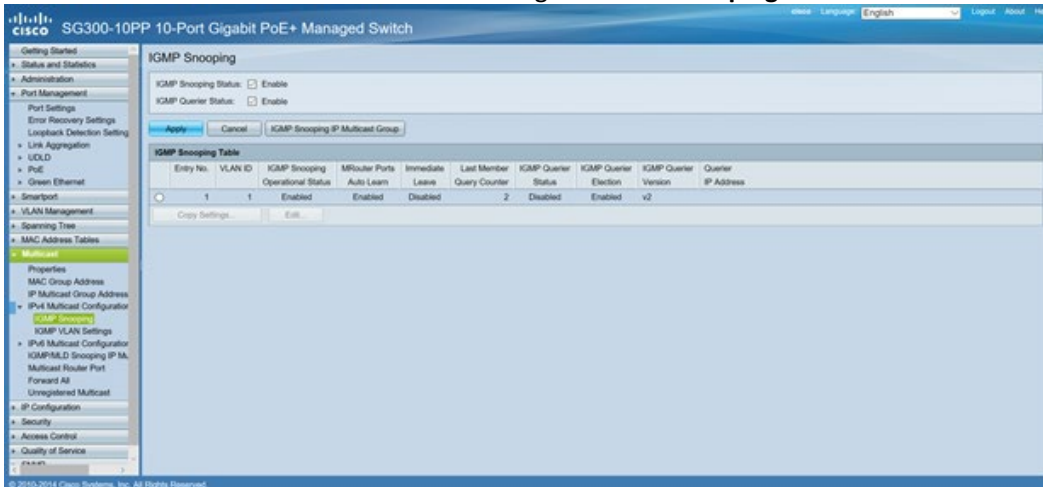
Cisco Configuration

The EVO-IP HDMI over IP System has been tested and confirmed to work with the Cisco SG300/500 and newer SG250/350/550 Switches. Below are screenshots (used with SG350-28P) showing the configuration needed to get the system up and running. Please refer to their manual and instructions on how to get into their settings.

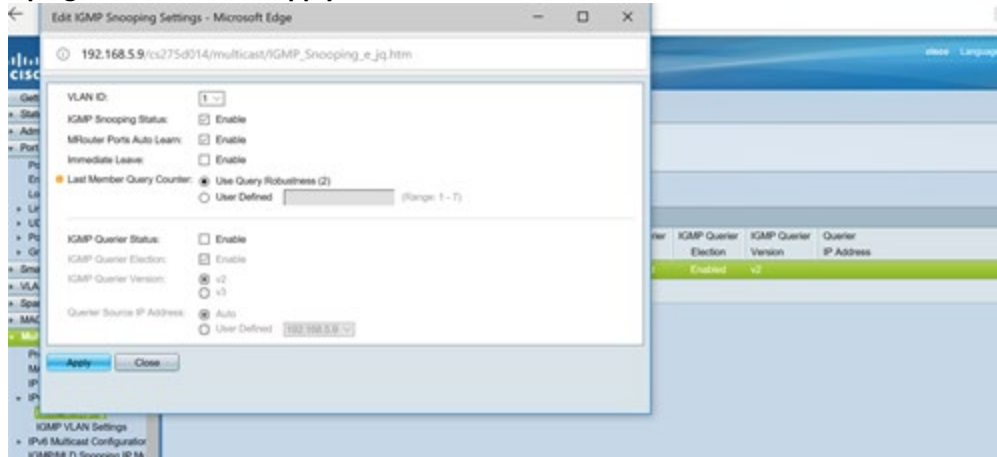
1. Enable IGMP Snooping by going to: **Multicast->IPv4 Multicast Configuration->IGMP Snooping**. Enable the **IGMP Snooping Status** and **IGMP Querier Status** then click **Apply**.



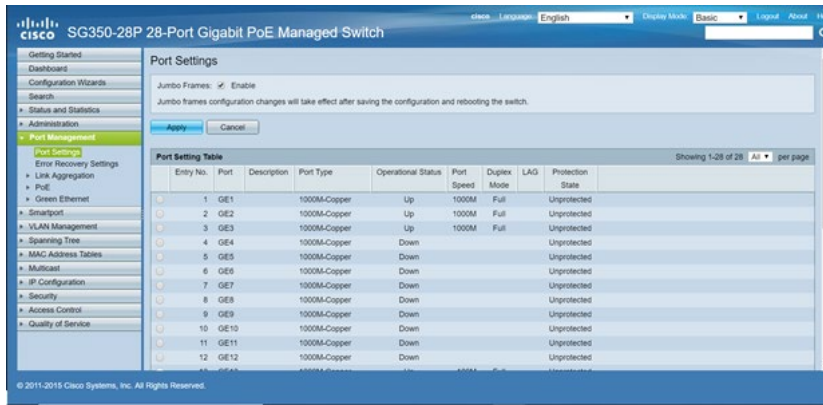
2. After enabling IGMP Status and IGMP Querier Status need to go to **IGMP Snooping Table** check mark and select **Edit**.



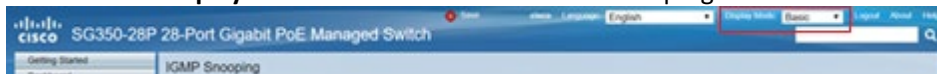
3. Enable IGMP Snooping Status and then **Apply**.



4. Enable **Jumbo Frames** by going to **Port Management->Port Settings**. Click on the checkbox to **Enable Jumbo Frames**, then click **Apply**.



5. Click on the dropdown menu for **Display Mode** and select **Advanced** in the top right hand corner of the screen.



6. From the options on the left of the screen, go to **Multicast**, then **Properties**. Click on the box to **Enable Bridge Multicast Filtering Status** then click **Apply**.

