



# FF130 - 2x4

1 Hour Fire Rated Troffer Cover  
UL Classified for 2' x 4' fluorescent & LED luminaires

---

## Product Description

The FF130 - 2x4' Luminaire Covers are UL fire rated enclosures designed to protect recessed 2' by 4' luminaires, troffers and fluorescent fixtures.

Due to its flexible and durable design, the covers are ready to install with no assembly required and can even be retrofitted into position. The FF130 Cover can be folded to ease installation in restricted spaces.

---

## Key Benefits

- 60 minute fire protection
- Fits most popular fluorescent fixtures
- Suitable for lay-in tile ceilings
- Lightweight (approx. 7 lbs.)
- Easy Installation - can be fitted in seconds - no screws, drilling or additional sealant required
- Enhances the acoustic protection of the ceiling
- Reduces heat loss through the fixture
- Maintenance free
- Cable entry points can be made anywhere on the top and sides for ease of wiring of the fixture
- UL Classified

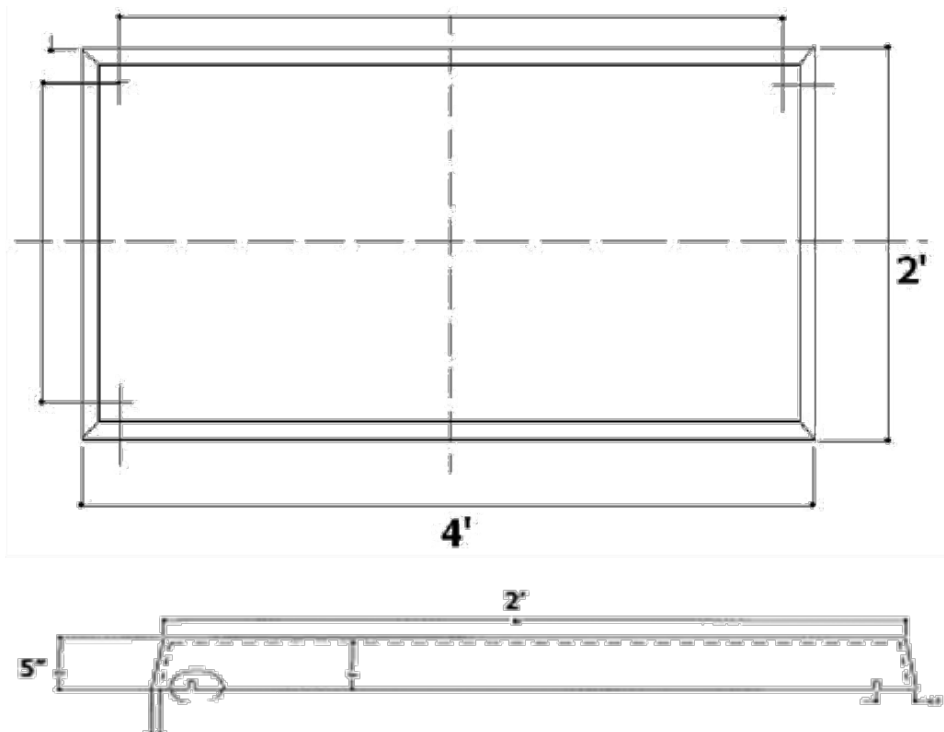
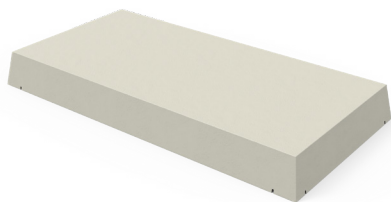


## Approvals

UL Classified to maintain the fire rating (1 hour) for the following fire-rated assemblies:

A202, D203, D216, D219, G205, G208, G218, G252, G255, G256, G262, G264, J201, J202, L006, L201, L202, L206, L209, L210, P202, P204, P206, P207, P210, P211, P213, P214, P216, P225, P227, P228, P229, P230, P231, P235, P238, P242, P246, P250, P251, P254, P255, P259, P260, P261, P264, P265, P267, P268, P269

## Dimensions



## Installation Steps

### STEP 1

Install the UL listed light fixture per the installation method and spacing requirements as specified in the individual UL design.

To accommodate for the electric supply, a small hole can be easily poked through the cover without any tools.

Note: The electric supply should have a snug fit.

### STEP 2

Place a single spacer, approx. 4"x4" (e.g. piece of ceiling tile, mineral wool batt) centrally located on top of the light fixture to provide a minimum 0.5" clearance between the light and the cover.

For 2'x4' fixtures, use two spacers, one spacer on each end. The height of the fixture housing shall not cause the bottom of the cover to lose contact with the ceiling tiles.

### STEP 3

Place the cover on top of the tee bar grid. The hanger wires at the corners of the grid supporting the light fixture shall not be relocated.

Instead, slits (max. depth 100 mm as measured from the bottom of the cover) may be cut in the cover above the existing slots to accommodate the hanger wires and allow the cover to sit flush with the ceiling tiles.

A 0.5" clearance shall be maintained between the top, sides and ends of the fixture and the enclosure. No additional sealant or fastening is required. End-to-end or side-by-side installation of fixtures has not been investigated.

## Safety Considerations

\*Be sure the electricity to the system you are working on is turned off; either the fuse removed or the circuit breaker set at off.

### *CONTAINS STONE WOOL INSULATION*

Stone fibers may cause temporary mechanical irritation to the skin, throat, nose and eyes.

### *FIRST AID*

#### **Skin**

If irritation occurs, do not rub or scratch. Rinse under running water prior to washing with mild soap and water. Consult a physician if irritation persists.

#### **Throat and Eyes**

If irritation occurs, flush eyes with water and/or drink water to clear throat. Do not rub the eyes. Consult a physician if irritation persists.

### *PRECAUTIONS*

Wear long sleeve, loose fitting clothing, gloves and eye protection. For additional information, refer to the Material Safety Data Sheet.

## Notes

## Notes

# FF130 - 2x4

---

Vanco International, LLC  
506 Kingsland Dr.  
Batavia, IL 60119 USA



(630) 879-0006  
[www.vanco1.com](http://www.vanco1.com)



Tenmat warrants the materials it produces will conform to Tenmat specifications and approved drawings where applicable. It is entirely the customer's responsibility to make the final product choice and satisfy themselves of the suitability of the product for the intended application, carrying out testing where required. For construction projects, all products which the customer is intending to use on a particular project must be approved in writing by the customer's building designer, system designer or design control professional, to ensure compliance with the latest regulations.

The information contained in Tenmat data sheets is presented in good faith. Tenmat Limited makes passive fire protection product suggestions based solely upon and limited to the information made available to Tenmat. Tenmat possesses knowledge of fire test data and offers manufacturers installation advice. Within reason, Tenmat is skilled at offering opinion concerning the installations in question, and can comment on interfaces with other construction materials, but this is not a recommendation or decision. Decisions on overall building fire strategy are not made by Tenmat. Tenmat products have been tested for a wide range of construction types, and they must be only used in accordance with Tenmat test evidence. Each specific Tenmat product must be installed into a construction that matches the corresponding test report. Tenmat product performance requires safe and proper handling and correct installation. For construction projects, all products which the customer is intending to use on a particular project must be approved in writing by the customer's building designer, system designer or design control professional, to ensure compliance with the latest regulations. Tenmat can provide the relevant fire test evidence on request.