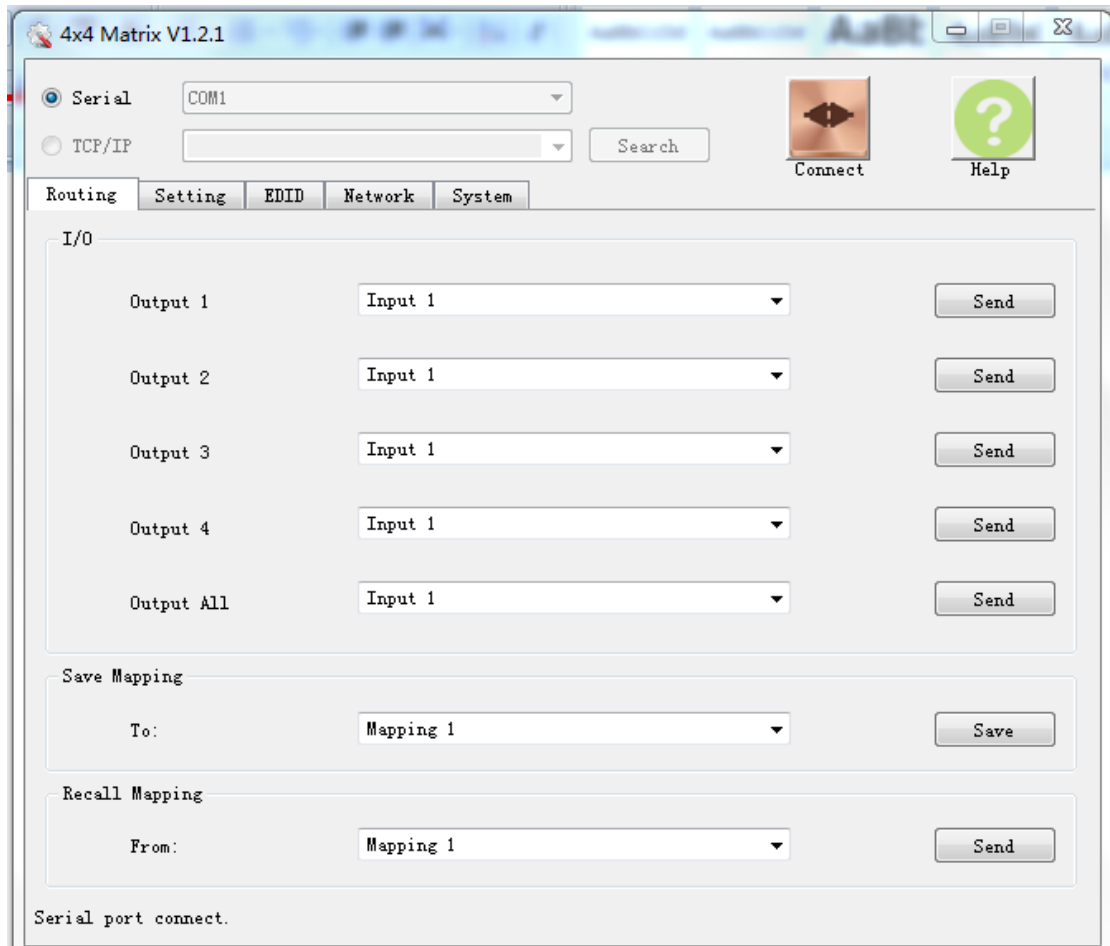


GUI User Guide

1. Input Selection and Mapping



I/O:

- Select the input

- Click "Send" to change the I/O setting

Save Mapping:

- Select Mapping(1-8)

Preset mapping:

- Select Mapping(1-8)

- Click "Send" button to recall previous mapping which are saved

2: Rename I/O Button

The screenshot shows the '4x4 Matrix V1.2.1' application window. At the top, there are radio buttons for 'Serial' (selected, with 'COM1' in the dropdown) and 'TCP/IP' (with an empty dropdown). To the right is a 'Search' button. Further right are 'Connect' and 'Help' buttons. Below these are tabs for 'Routing', 'Setting' (active), 'EDID', 'Network', and 'System'. The 'Rename I/O' section contains two rows of input fields: 'Output / Name' with fields 1-4 containing 'Output 1' through 'Output 4', and 'Input / Name' with fields 1-4 containing 'Input 1' through 'Input 4'. An 'Apply' button is at the bottom right of this section. The 'Rename Mapping' section contains two rows of input fields: 'Configuration / Name' with fields 1-4 containing 'Mapping 1' through 'Mapping 4', and a second row with fields 5-8 containing 'Mapping 5' through 'Mapping 8'. An 'Apply' button is at the bottom right of this section. At the very bottom, a status bar says 'Serial port connect.'

4x4 Matrix V1.2.1

☒ Serial COM1 ☐ TCP/IP

Connect **Help**

Routing **Setting** **EDID** **Network** **System**

Rename I/O

Output / Name

1 Output 1 2 Output 2 3 Output 3 4 Output 4

Input / Name

1 Input 1 2 Input 2 3 Input 3 4 Input 4

Apply

Rename Mapping

Configuration / Name

1 Mapping 1 2 Mapping 2 3 Mapping 3 4 Mapping 4

5 Mapping 5 6 Mapping 6 7 Mapping 7 8 Mapping 8

Apply

Serial port connect.

Rename I/O:

- Rename output name

- Rename input name

Rename Mapping:

- Rename Mapping name

3: EDID BUTTON

The screenshot shows the '4x4 Matrix V1.2.1' software window. At the top, there are radio buttons for 'Serial' (selected) and 'TCP/IP', with a 'COM1' dropdown and a 'Search' button. To the right are 'Connect' and 'Help' buttons. Below this is a tabbed interface with 'Routing', 'Setting', 'EDID' (selected), 'Network', and 'System'. The 'EDID' tab contains four sections: 'Learn EDID From Default' with 'From' (1. Full-HD-24bit 2D @ 2ch @ Dolby 5.1ch) and 'To' (Input 1) dropdowns and a 'Learn' button; 'Learn EDID From Display' with 'From' (1. HDMI Output1) and 'To' (Input 1) dropdowns and a 'Learn' button; 'Load EDID File' with a 'To' (Input 1) dropdown and a 'Load' button; and 'View or Create EDID File' with a 'View / Create' button. At the bottom, a status bar reads 'Serial port connect.'

Learn EDID from Default

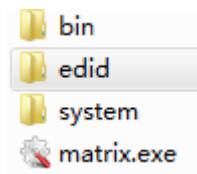
- Select Default EDID(1-9 Default EDID)
- Select Input
- Click “Learn” button to learn default EDID

Learn EDID From Display

- Select output
- Select input
- Click “Learn” button to learn display EDID

Load EDID File To Input

- Select Input
- Click “Load” button to load EDID file (Please refer to EDID file in “EDID” folder as below)



View EDID

Click “View / Create” button, display “EDID Analysis” popup menu

Select Input or HDMI output, then read EDID and analysis

You can also load EDID file for analysis

Create EDID

Click “View / Create” button, display “EDID Analysis” popup menu

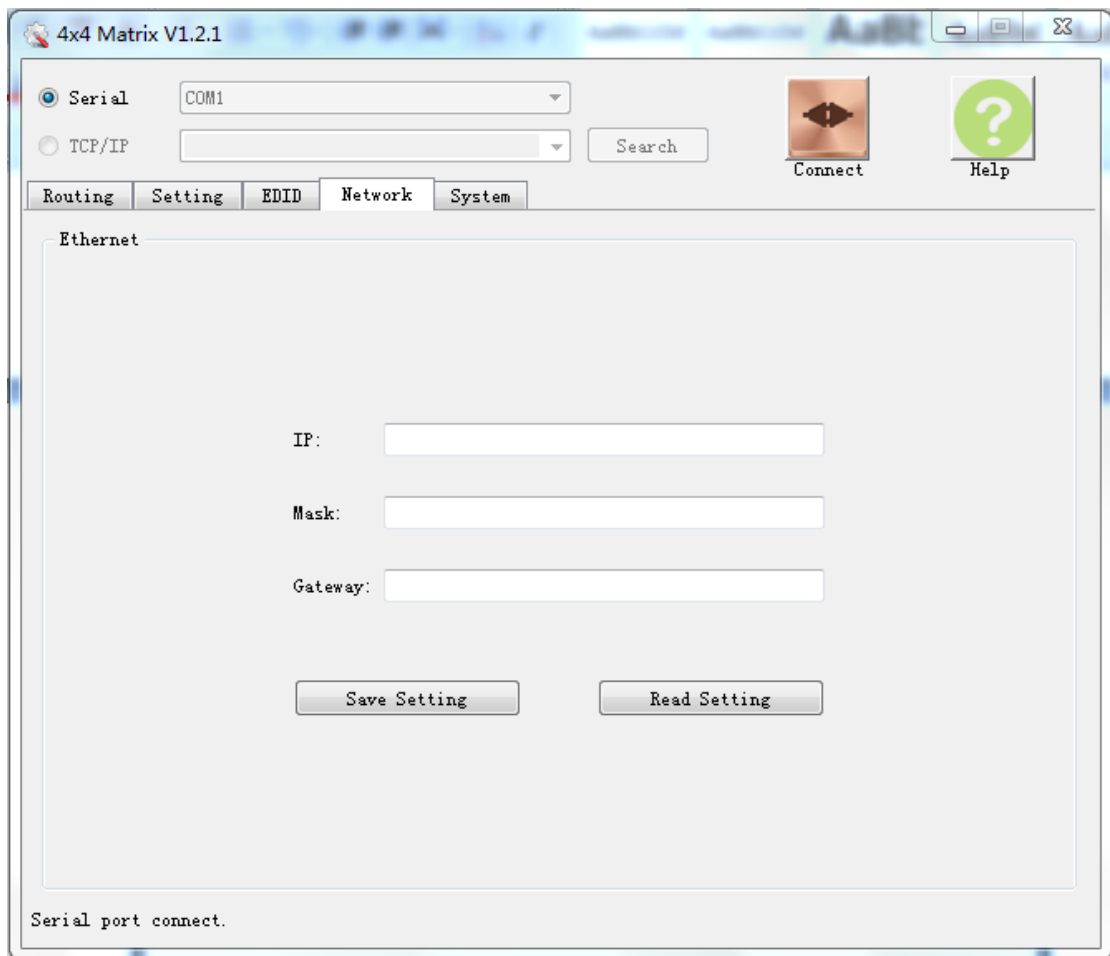
Click “Create EDID”, you can choose EDID content as you want,

Click “Apply” button, The content of 256 bytes will update as your chose parameters

Click “Copy” button, The 256 bytes EDID will copy to Clipboard, you can paste the 256 bytes in notepad

Click “Save As” button , you can save the 256 bytes to an EDID file in your folder

4: NETWORK



Save Setting

Save the IP address which is manually entered

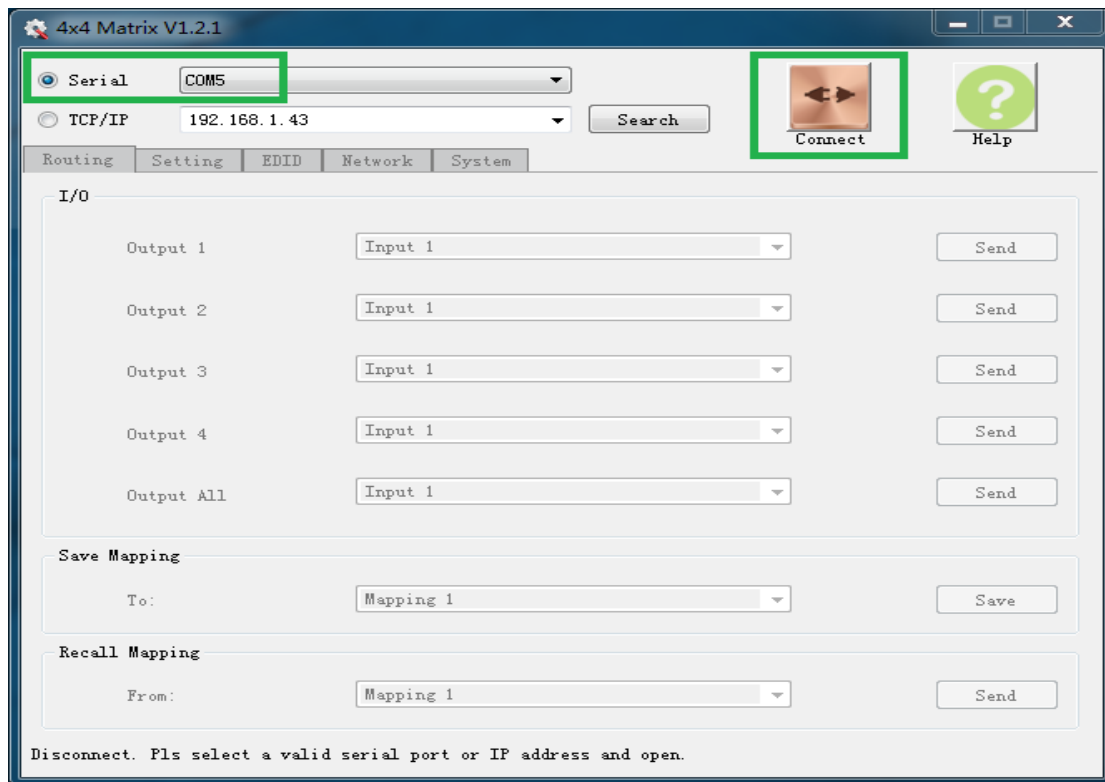
Read Setting:

Read the IP address from the device

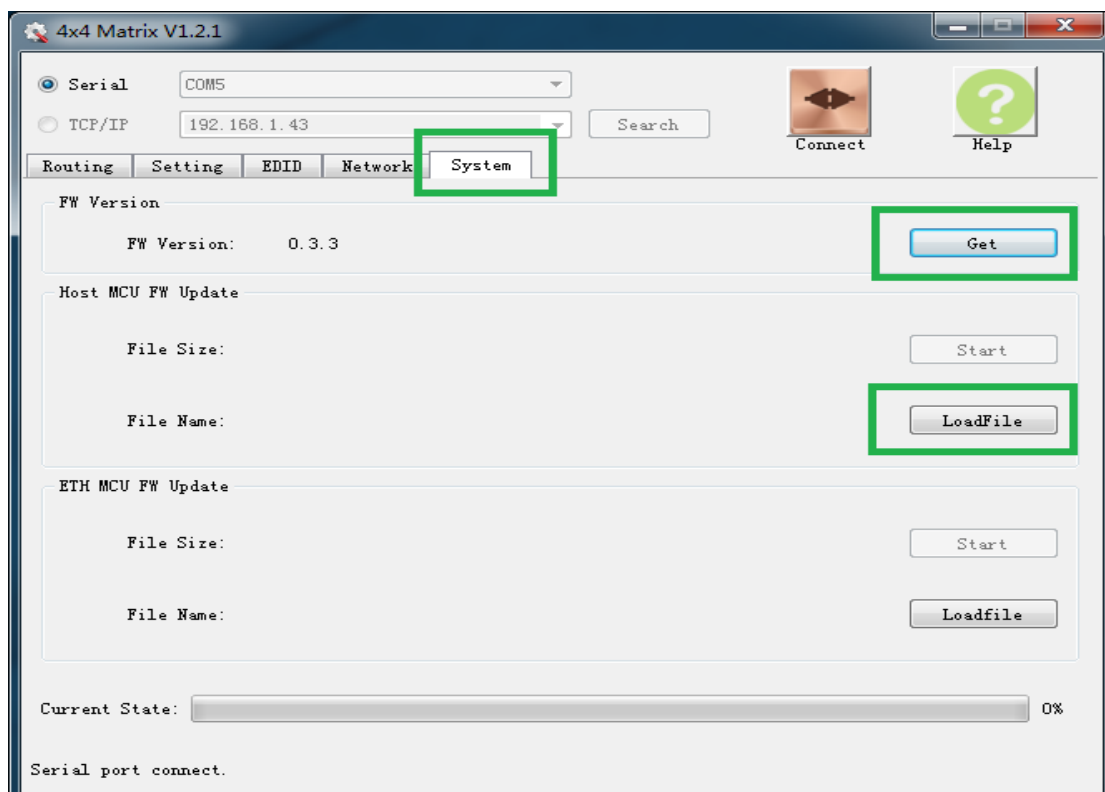
5: SYSTEM BUTTON

You can update firmware as below

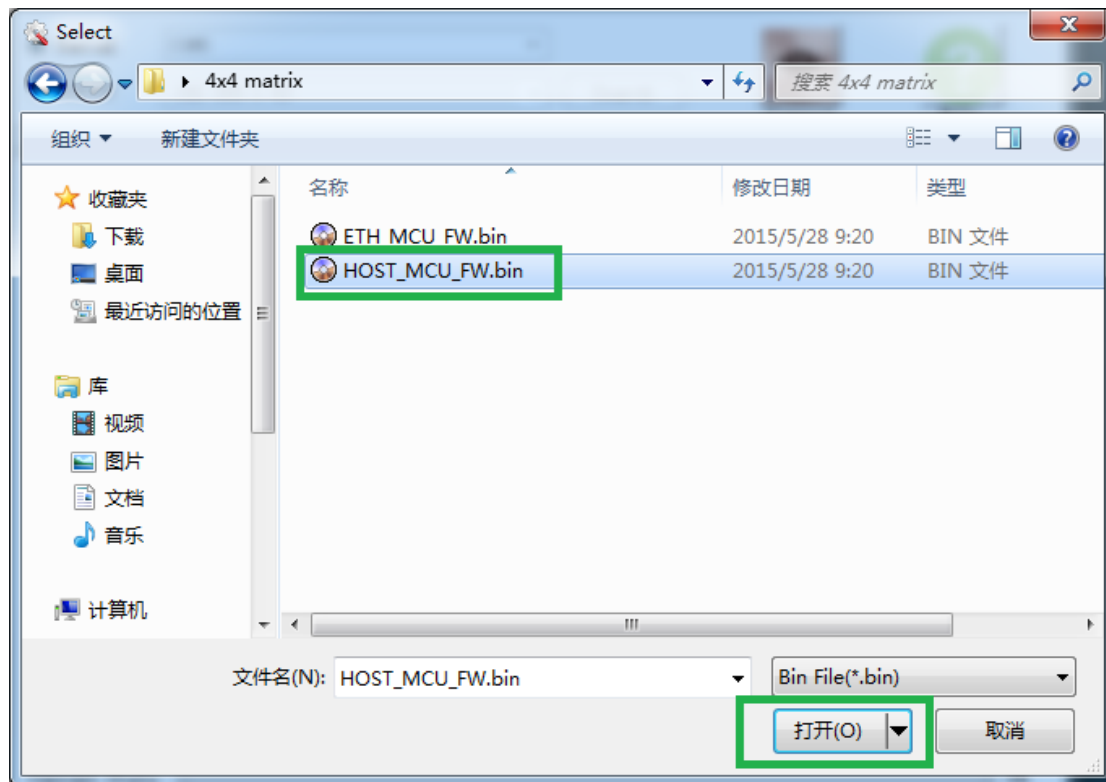
1. Choose the corresponding serial port, then click “Connect” button to open serial port:



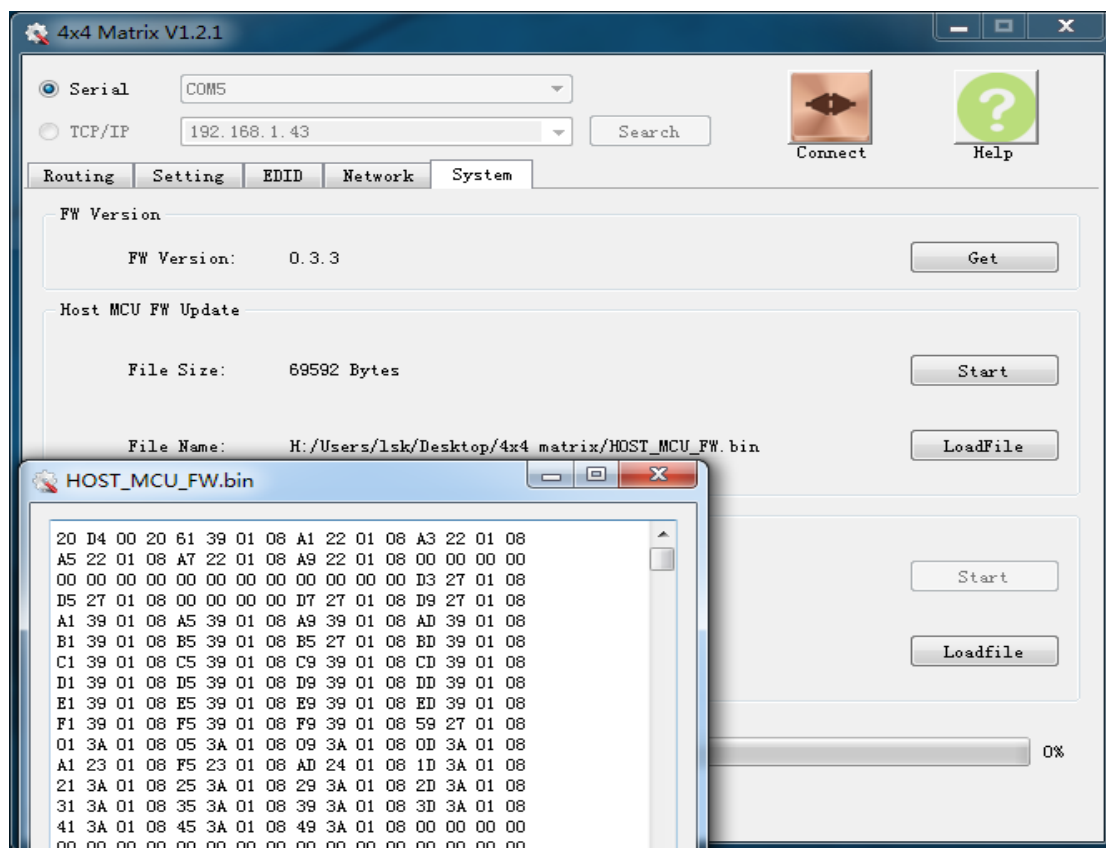
2. Click “System” label, enter Firmware update interface, Click “LoadFile” button in “Host MCU FW Update” Combo box, and you can click “Get” button to see the Firmware version:



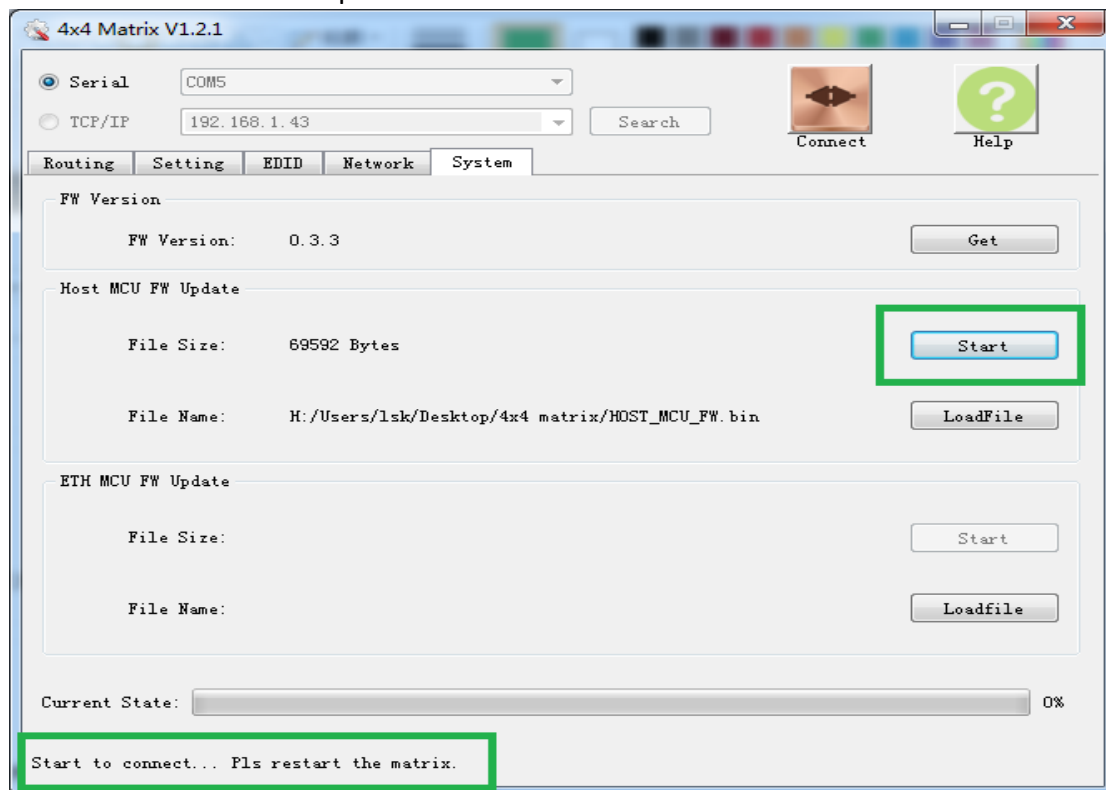
- Find the file path at popup dialog menu, Choose the bin file, "HOST_MCU_FW.bin", Click "Open" Button



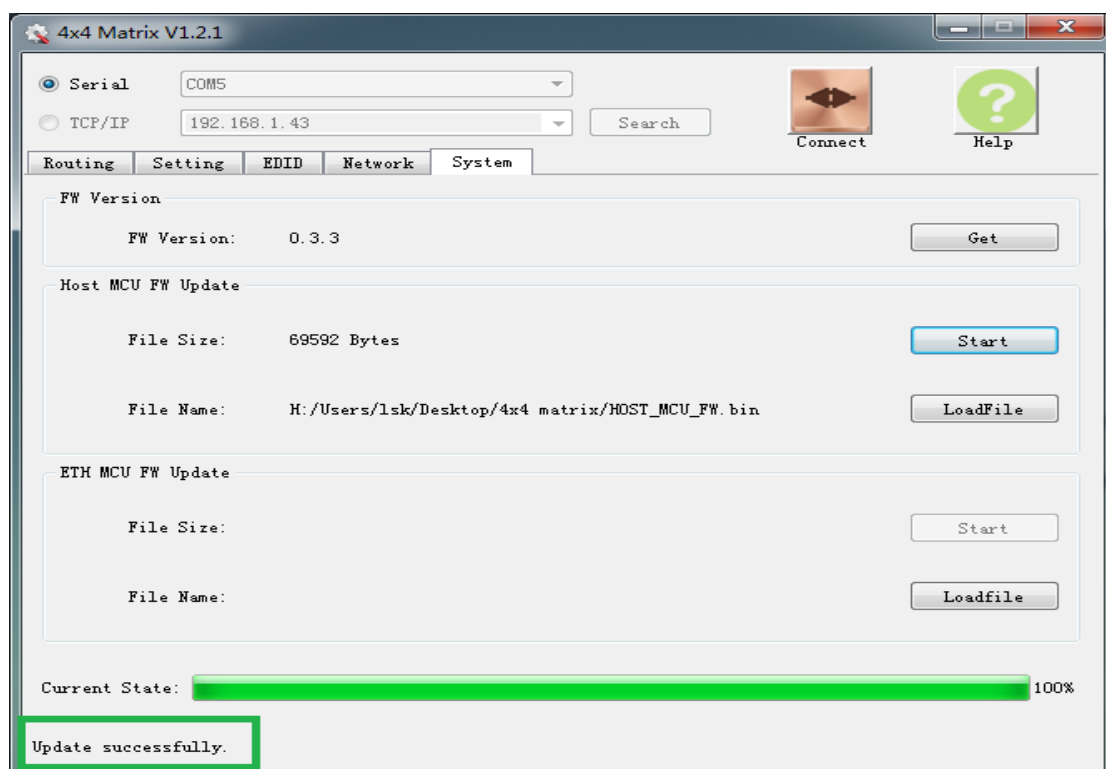
- Then popup a new dialog, Display corresponding hexadecimal content of bin file, You can close this window:



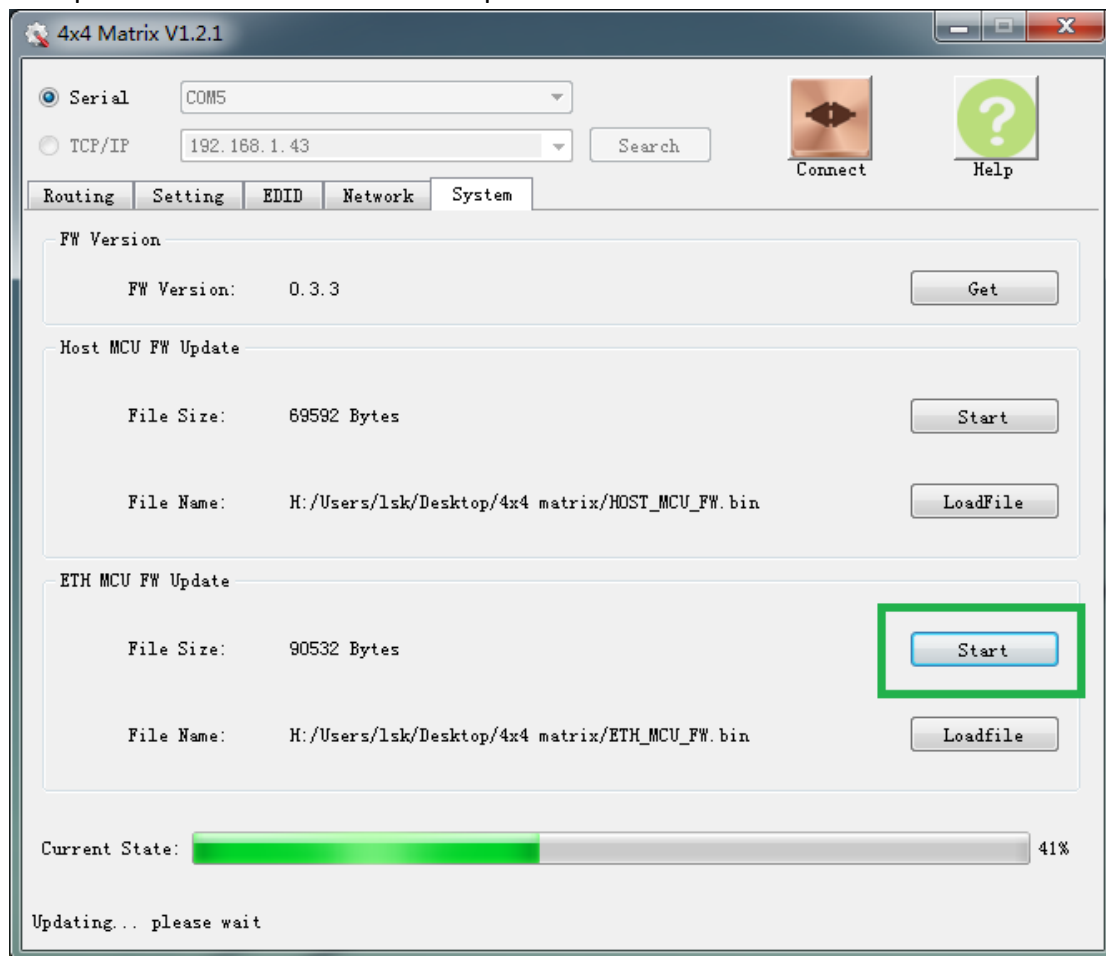
- Click “start” button in “Host MCU FW Update” Combo box, The status bar at GUI left bottom corner will show information “Start to connect ... Pls restart the machine.”, what you do is to power down matrix, then power on, wait for the firmware automatic update



- When matrix is power on, Update is working; Progress bar will show the update progress; Status bar will show “Update successfully” once update is completed

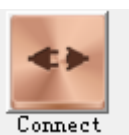


7. Similarly, you can update the firmware “ETH_MCU_FW.bin” in “ETH MCU FW update” Combo box as above step1~6

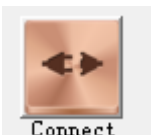


6: COM PORT SELECTION

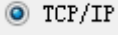
Click  button to select COM

Port , Click  to connect to responding serial port


7: CONNECT/ DISCONNECT

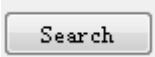
Click  button to change connection status, it will toggle between connect and disconnect status

8: ETHERNET

Once click  button to switch to Ethernet function, it will auto search IP address, then display the address as below




Click  , The “Routing,Setting,EDID,Network,System” menu will be available for user, user can control matrix via ethernet

Click  button, it will research matrix IP address again

9: HELP BUTTON



Click  button, Open the user manual document