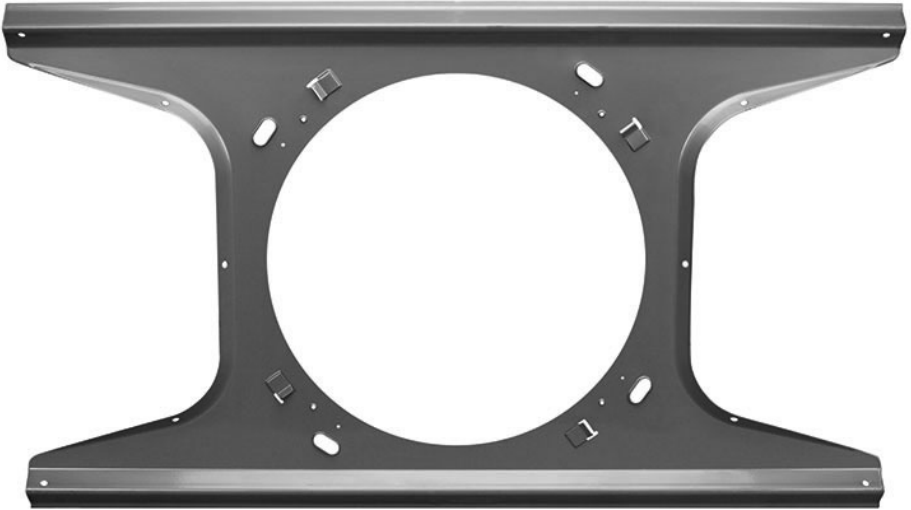


Beale Street Audio

TB65, TB80 TILE BRIDGE

Installation Guide



Get Reale. Get Beale.™

Introduction

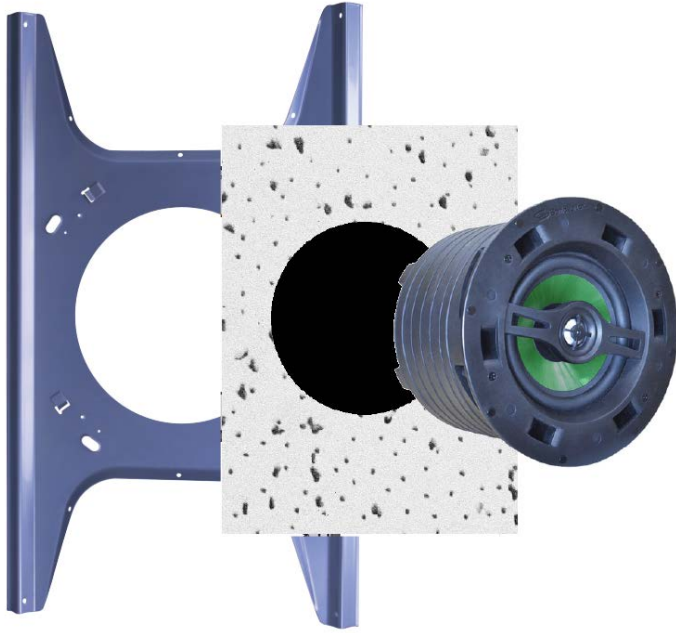
Congratulations and thank you for purchasing Beale Street Audio TB65/ TB80 Tile Bridge.

The TB65 and TB80 tile bridges are specifically designed to provide additional mounting support for the installation of Beale Street speakers. They can be used on 2'x2' and 2'x4' suspended ceilings to provide load bearing support to prevent damage or sagging.

Please follow the instructions in this manual to assure proper installation and to achieve the full performance and satisfaction you would expect from Beale Street Audio.

| | | |
|-------------|------------------------------|---|
| TB65 | Dimensions: | 23.8" x 13.9" |
| | Weight: | 1.2lbs |
| | Cutout: | 8.4" |
| | Material: | Metal |
| | Beale Street Speaker Models: | IC6-B/MB/BB, ICA6-B/MB/BB, IC6DVC-B, ICW6-MB, P4-MB/BB, TU401, TIC651, BS650, ICS6-MB |
| | | |
| TB80 | Dimensions: | 23.8" x 13.9" |
| | Weight: | 1.4lbs |
| | Cutout: | 10.3" |
| | Material: | Metal |
| | Beale Street Speaker Models: | IC8-B/MB/BB, TIC801, ICS8-MB |

Installation



1. Remove the ceiling tile from drop ceiling grid.
2. Place the tile bridge on top of the ceiling tile and align the ends of the TB65/TB80 with the end of the ceiling tile.
3. Trace the inner circle of the tile bridge onto the ceiling tile. Cut out and remove the circle.
NOTE: The ceiling speaker will typically be mounted in the center of the ceiling tile. If this is not the case in your installation, make sure that the ceiling tile does not interfere with the suspension grid.
4. Place the ceiling tile between the tile bridge and the speaker and tighten the speaker clamps.
5. Complete speaker installation and connections as directed in speaker's instruction manual.

Limited Warranty

With the exceptions noted in the next paragraph, Vanco warrants to the original purchaser that the equipment it manufactures or sells will be free from defects in materials and workmanship for a period of two years from the date of purchase. Should this product, in Vanco's opinion, prove defective within this warranty period, Vanco, at its option, will repair or replace this product without charge. Any defective parts replaced become the property of Vanco. This warranty does not apply to those products which have been damaged due to accident, unauthorized alterations, improper repair, modifications, inadequate maintenance and care, or use in any manner for which the product was not originally intended. Items integrated into Vanco products that are made by other manufacturers, notably computer hard drives and liquid crystal display panels, are limited to the term of the warranty offered by the respective manufacturers. Such specific warranties are available upon request to Vanco. A surge protector, power conditioner unit, or an uninterruptible power supply must be installed in the electrical circuit to protect against power surges. If repairs are needed during the warranty period, the purchaser will be required to provide a sales receipt/sales invoice or other acceptable proof of purchase to the seller of this equipment. The seller will then contact Vanco regarding warranty repair or replacement.

TECHNICAL SUPPORT

In case of problems, please contact Vanco Technical Support by dialing 1-800-626-6445. You can also email technical support issues to techsupport@vanco1.com. When calling, please have the Model Number, Serial Number (affixed to the bottom of the unit) and Invoice available for reference during the call. Please read this Instruction Manual prior to calling or installing this unit, since it will familiarize you with the capabilities of this product and its proper installation. All active electronic products are 100% inspected and tested to insure highest product quality and trouble-free installation and operation. The testing process utilizes the types of high-definition sources and displays typically installed for entertainment and home theatre applications. For additional information please visit www.vanco1.com.

LIABILITY STATEMENT

Every effort has been made to ensure that this product is free of defects. The manufacturer of this product cannot be held liable for the use of this hardware or any direct or indirect consequential damages arising from its use. It is the responsibility of the user and installer of the hardware to check that it is suitable for their requirements and that it is installed correctly. All rights are reserved. No parts of this manual may be reproduced or transmitted by any form or means electronic or mechanical, including photocopying, recording or by any information storage or retrieval system without the written consent of the publisher. Manufacturer reserves the right to revise any of its hardware and software following its policy to modify and/or improve its products where necessary or desirable. This statement does not affect the legal rights of the user in any way.

The Vanco logo, Sonic Vortex logo, and Beale Street Audio Inc. logo are registered trademarks of Vanco International, LLC.

Vanco, Sonic Vortex, Beale Street Audio, Get Reale. Get Beale., the Vortex logo, and the Beale Street Audio logo are trademarks of Vanco International, LLC.



Get Reale. Get Beale.™

A BRAND OF 
Vanco International, LLC
506 Kingsland Drive
Batavia, IL 60510

Phone: 800.626.6445 Fax: 630.879.9189

www.getbeale.com

©2018

